



UNIVERSITÄT
DUISBURG
ESSEN

Open-Minded

The University of Duisburg-Essen

Broad base, strong peaks.

In the heart of Europe





Photo: Stadt Essen

Duisburg

- 501.591 inhabitants
- the most important steel production site in Europe
- logistical centre of Germany, with the largest inland port in Europe
- home of the Wilhelm Lehmbruck-Museum

Essen

- 590.611 inhabitants
- the cultural and economical centre of the Rhine-Ruhr region as well as a hotspot of the service industries
- European Capital of Culture RUHR.2010
- European Green Capital 2017

Good Connections

- a special shuttle bus travels the 20-km distance between the campuses
- the campuses in Essen and Duisburg are connected by the "Ruhr Bicycle Expressway", the last section of which is currently under construction
- motorists take Route A40, traditionally known as the "Ruhr Expressway"





History

- **August 1, 1972**
foundation of two universities (Gesamthochschulen) in the cities Duisburg and Essen
- **January 1, 2003**
merger of the two universities and foundation of the University of Duisburg-Essen (UDE)
- **March 12, 2007**
foundation of the University Alliance Ruhr (UA Ruhr), a strategic research alliance with neighboring universities
- **2019**
UDE holds place 16 in the Times Higher Education Ranking of the world's 250 best young universities and ranks first among the German universities evaluated. (Source: THE-250 rankings under 50)

Open-Minded

We are one of the youngest universities in Germany and have a fresh way of looking at things. We think in terms of unlimited possibilities instead of possible limitations. Located in the heart of the Ruhr metropolis, we have 11 faculties working to develop ideas with a future. We are strong on research and teaching, embrace diversity, promote academic potential and fight for genuine educational equality.



11 Departments

- Humanities
- Social Sciences
- Educational Sciences
- Economics
- Business Administration
- Mathematics
- Physics
- Chemistry
- Biology
- Engineering
- Medicine



People at the University

42,925	students
509	professors
3,815	academic staff
1,557	employees technical support and administrative services (excluding Faculty of Medicine)

Budget

374.7 mill. € Public Funds State of North Rhine-Westphalia, of which
100.9 mill. € is for the Faculty of Medicine

140.1 mill. € Third-Party Funds, of which
44.6 mill. € is for the Faculty of Medicine

Studying & Teaching



Students

42,925 **students**
 49 % female students
 19 % international students
 53 % First-generation students

11,829 **first-year students**
 52 % female students
 21 % international students

5,499 **graduates**
 52 % female students
 16 % international students

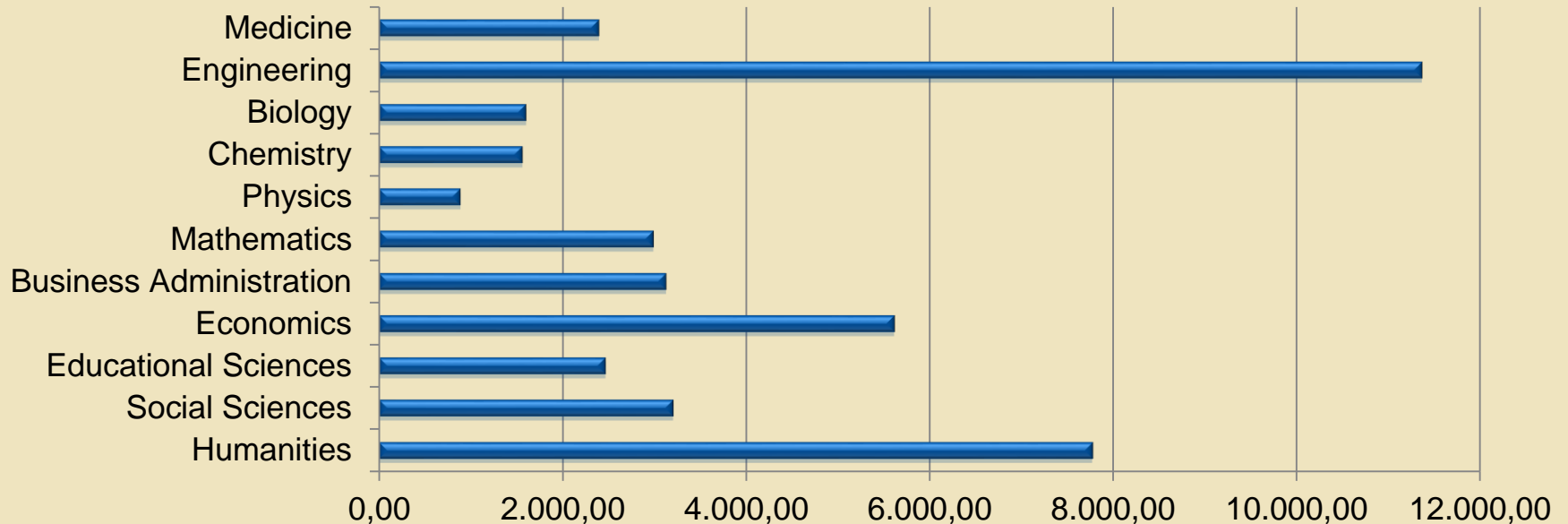


Students

6.639 incoming students with foreign entrance qualifications

23 %	Europe
64 %	Asia
11 %	Africa
2 %	The Americas
1 %	Australia

Students by Department



Research

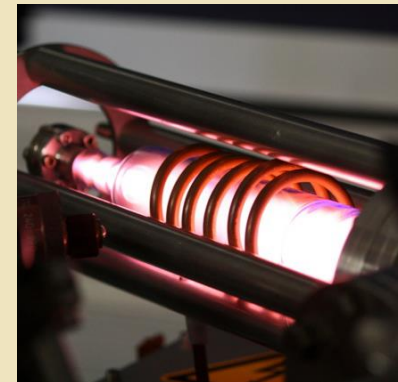
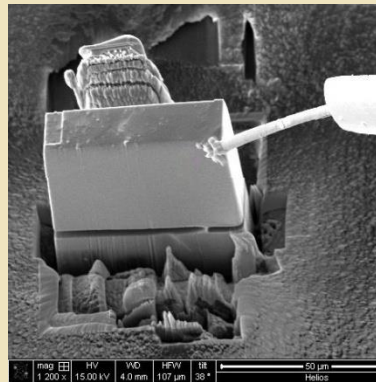
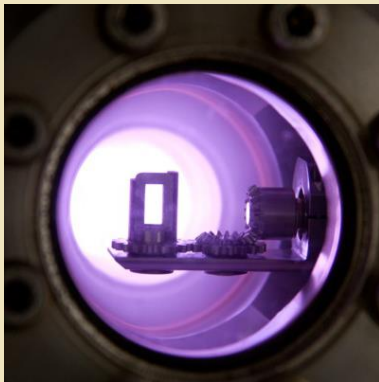


Main Research Areas

- Nanosciences
- Biomedical Sciences
- Urban Systems
- Transformation of Contemporary Societies
- Water Research

Nanosciences

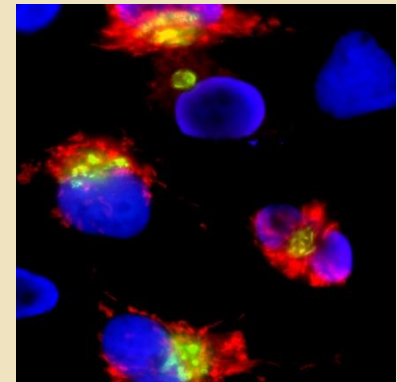
- development of nanostructured functional materials for a broad range of applications in a high-tech research center, special focus on applications in the energy sector
- more than 60 research groups comprising approx. 350 scientists from the fields of chemistry, physics, medicine and the engineering sciences are participating, among other things, in collaborative research centres, research training groups and numerous cooperative ventures with industry
- bachelor's and master's programmes in nanoengineering



Photos: CENIDE

Biomedical Sciences

- new diagnostic methods and treatments are being developed in cooperative interdisciplinary projects
- connect the medical research at the Essen University Hospital and the Erwin L. Hahn Institute with the basic scientific research at the Centre for Medical Biotechnology (ZMB)
- the B.Sc. programme in medical biology is in especially high demand with 2,700 applicants yearly



Photos: ZMB

Urban Systems

- in rapidly urbanising (as well as in shrinking) regions, climate mitigation and adaptation, conservation of natural resources, etc. are important issues
- located in one of the largest heavily populated areas in Europe, all 11 UDE faculties are conducting research to find multi-layered solutions to the problems facing the urban world today
- the Joint Centre aims to establish a leading European centre for broad-based urban research, with international visibility, involved in the instruction and training of the next generation of scientists



Photos: ISS/UDE

Transformation of Contemporary Societies

- patterns of order in society are modified by the displacement, disappearance and persistence of borders between people, nations, markets, etc.
- the multidisciplinary research being carried out by the six institutes at the UDE connects the fields of sociology, educational science, economic science, political science and other disciplines
- Käte Hamburger Kolleg/Centre for Global Cooperation Research



Photos: UDE

Water Research

- A sustainable and global water cycle is one of the greatest social challenges of our time.
- How can we succeed in ensuring that water and sanitation facilities are available to all people and that this precious resource is managed sustainably?
- Topics among others: Water treatment and purification, biodiversity and environmental consequences of heavy rainfall



Photos: pixabay.com

German Research Foundation (DFG) Programmes

- **19 Collaborative research centres SFB/TR**
(5 lead institution and 14 participating university)
in Biochemistry, Medicine, Physics and Mathematics and Engineering
- **12 Research training groups**
(10 lead institution and 2 participating university)
in Medical Biotechnology, Infectious Diseases, History, Radiobiology, East Asian Studies, Biomedicine and Social Media plus one participation in Mathematics
- **19 Research units**
(6 lead institution and 13 participating university)
in Engineering, Biology, Social Science, Medicine, Physics and Educational Research
- **39 Priority programmes**
(5 lead institution and 34 participating university)
in Chemistry, Engineering, Mathematics, Mechanics, Medicine, Educational Research
Nanosciences

Research Centres

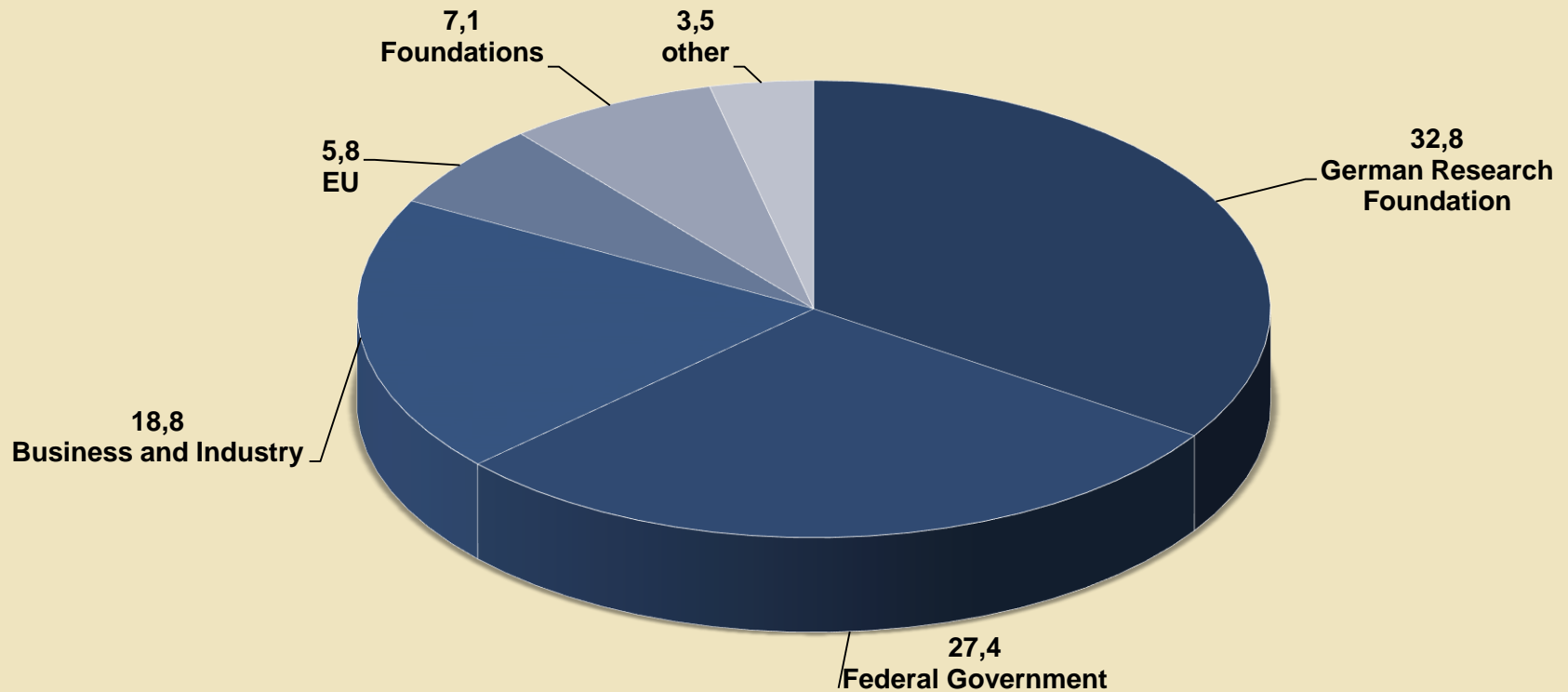
- Center for Nanointegration Duisburg-Essen (CENIDE)
- Centre for Computational Sciences and Simulation (CCSS)
- Centre for Logistics and Traffic (ZLV)
- Centre for Medical Biotechnology (ZMB)
- Centre for Water and Environmental Research (ZWU)
- Erwin L. Hahn Institute for Magnetic Resonance Imaging (ELH) with the Radboud University Nijmegen
- Essen College of Gender Studies (EKfG)
- Institute of East Asian Studies (IN-EAST)
- Interdisciplinary Centre for Educational Research (IZfB)
- Interdisciplinary Centre for Integration and Migration Research (InZentIM)
- Käte Hamburger Kolleg/Centre for Global Cooperation Research
- paluno – The Ruhr Institute for Software Technology

Associated Institutes of the University

- Center for Studies on Turkey and Integration Research (ZfTI)
- Centre for Fuel Cell Technology (ZBT)
- Confucius Institute Metropolis Ruhr
- Development Centre for Ship Technology and Transport Systems (DST)
- German Textile Research Centre North-West (DTNW)
- Institute of Energy and Environmental Technology (IUTA)
- Institute of Mobile and Satellite Communication Technology (IMST)
- IWW Water Centre
- Mercator Institute for China Studies (MERICS)
- Rhine-Ruhr Institute for Social Research and Political Consulting (RISP)
- Salomon Ludwig Steinheim Institute (StI)

Expenditures of Third-party funds

Total sum 140,1 mill. Euro (44,6 mill. Euro thereof in the Faculty of Medicine)



Network

University Alliance Ruhr (UA Ruhr)

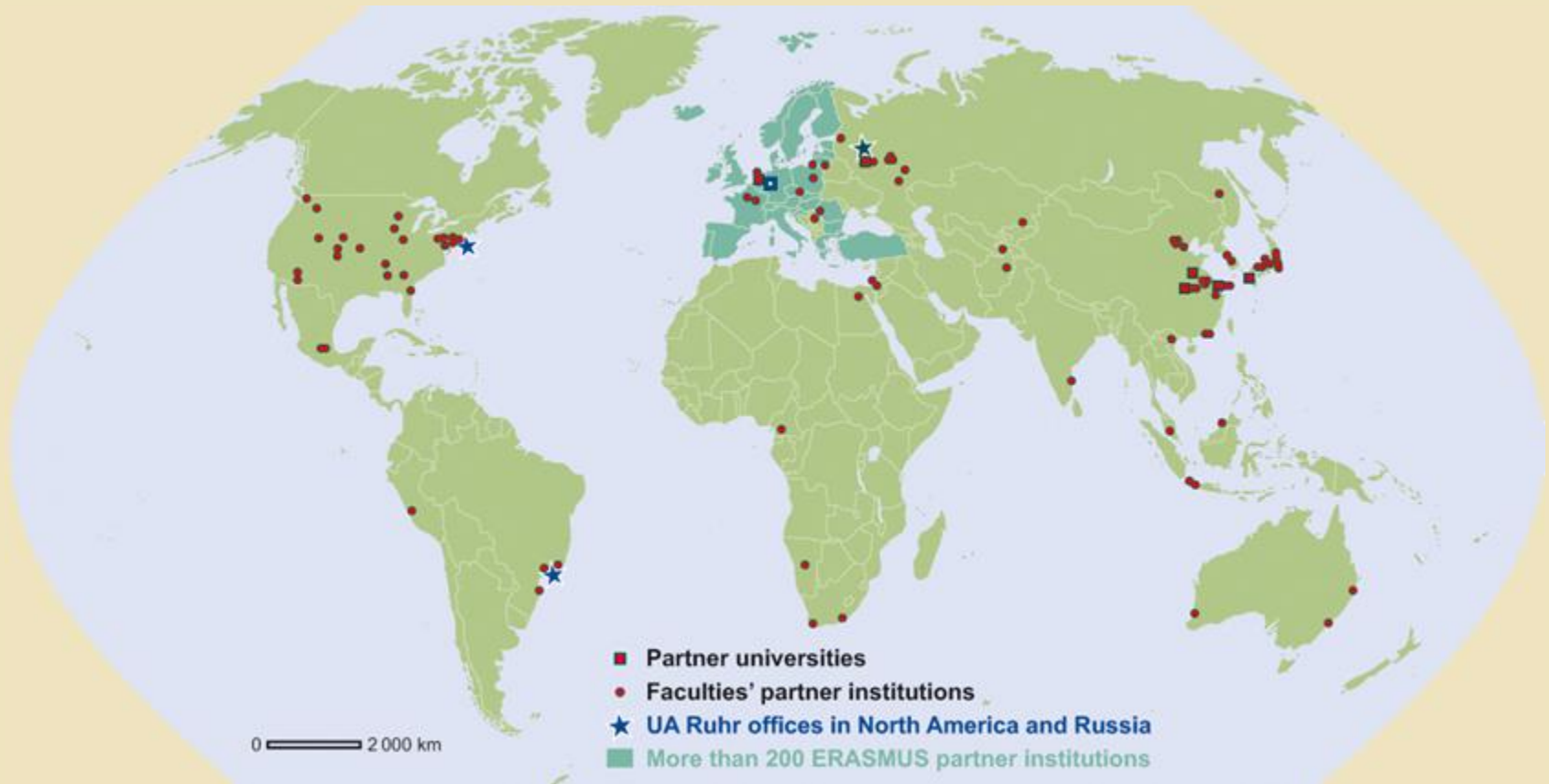
Unlimited possibilities: The alliance connects the universities of Bochum, Dortmund and Duisburg-Essen. It was founded in 2007 and has today

- more than 500 study courses, 120,000 students and 1,300 professors
- more than 16,000 graduates and 1,300 doctorates yearly
- about 1.4 milliards Euro budget volume yearly
- about 300 millions Euro third-party funds yearly
- **Joint Research Centres** KWI Institute for Advanced Study in the Humanities Essen
Alliance for Research on East Asia (AREA Ruhr)
- **Joint Main Research Areas** Materials Chain
Ruhr Explores Solvation (RESOLV)
- **100 professors at Competence Field Metropolitan Research**

AURORA...

- is a network of 9 universities (UDE, Vrije Universiteit Amsterdam, University of Iceland, University of East Anglia, University of Aberdeen, University Federico II of Naples, Université Grenoble-Alpes, Universitat Rovira i Virgili, Universität Innsbruck)
- universities are excellent in research and dedicated to social responsibility and diversity
- connects societal impact and relevance of research
- means learning from trusted partners

99 active partnerships worldwide





Information and Counselling

- **Center for Higher Education and Quality Development**
more than 100 services for quality assurance, teaching and learning
- **Centre for Information and Media Services**
with 30,000 interconnected systems
- **Centre for Teacher Education**
2,500 work placements registered per year
- **Student Counselling and Academic Career Services**
with more than 18,500 annual contacts
- **University Library**
with 2,4 million print volumes
- **University Sports**
1,500 courses per year



Offers for everyone

- **Mercator-Professorship**
e.g. Richard von Weizsäcker, Christiane Nüsslein-Volhard, Alice Schwarzer, Götz Werner, Margarethe von Trotta, Karl Kardinal Lehmann, Alfred Grosser, Joachim Gauck
- **Poet in Residence**
e.g. Günter Grass, Judith Kuckart, Kathrin Röggla, Marion Poschmann, Klaus Modick, Lukas Bärfuss, Dorothee Elmiger & Reto Hänni, Christof Hamann
- **Scientist in Residence**
e.g. Wilhelm Barthlott, Julian Nida-Rümelin, Yi Cui, Heinz-Elmar Tenorth, Alan Ashworth, Michael Batty, John E. Bowers, Seyla Benhabib, Jan Gulliksen
- **Further events**
UniKids – lectures for children, Summer University, taster courses, competition for pupils “freestyle-physics”